



## Facility Rental Agreement



**Philip J. Currie Dinosaur Museum is an international institute for experiential learning dedicated to Alberta's palaeontological heritage, engaged in research, collection, preservation, exhibition, public programming, publications and innovative outreach.**



## Table of Contents

Overview	P. 3
Map of Museum	P. 4
Main Facilities	
• Foyer	P. 5
• Classrooms	P. 5
• Dine-O-Saur	P. 5
• Boardroom	P. 7
Theatre	P. 7
• Aykroyd Family Theatre A National Geographic Experience	
Outdoor Space	P. 8
• Parking Lot	
Entire Facility Rental	P. 8
Operating Hours	P. 9
Capacity Charts and Rates	P. 9
Clean up Fees	P. 9
Dino Bus Rental	P. 10
Event Information Form	P. 11



## AWARD WINNING MUSEUM

Philip J. Currie Dinosaur Museum is a world-class facility in the heart of the Peace Country on a 10 acre complex. Designed by Toronto-based Teeple Architects, it has been featured in several architectural/design publications including AZURE, NUVO, AMA, Conde Nast World Traveller and MUSE magazines.

The museum features extensive gallery spaces angled onto a unique set of beetle pine timber 7-beam nodal trusses, two classrooms, a 70-seat theater, research and collections areas, a restaurant, a gift shop, and tourist services. The triple-glazed zinc roof creates an exceptionally energy-efficient and sustainable building envelope to handle temperature extremes in the Grande Prairie.

The design draws on an abstraction of the palaeontological excavation experience with two massive retaining walls of poured concrete and gabions pushing back the earth to reveal the main galleries.

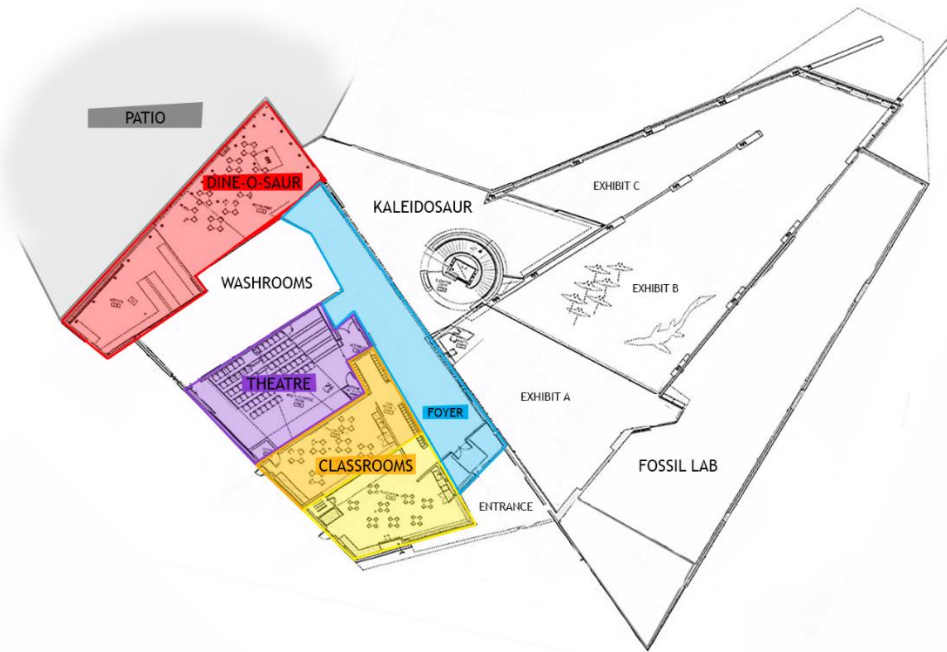
## PALAEO-HERITAGE

Named after Canada's leading Palaeontologist Dr. Philip Currie - one of the foremost professional voices around the globe - the new museum honours his lifelong commitment to the discovery and study of palaeo-heritage.

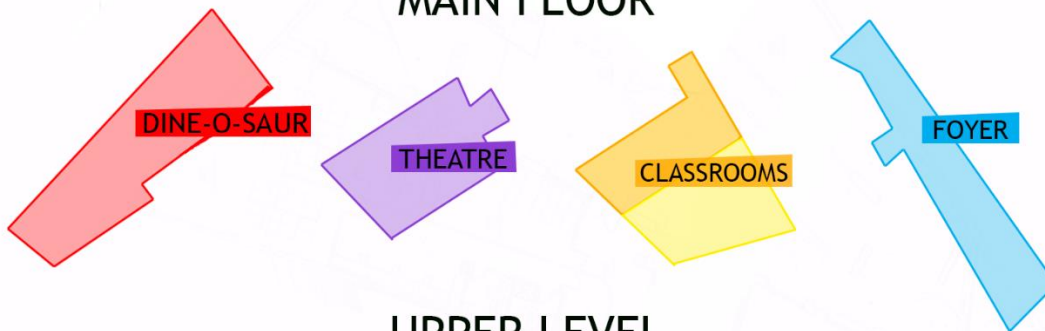


# Facility Map

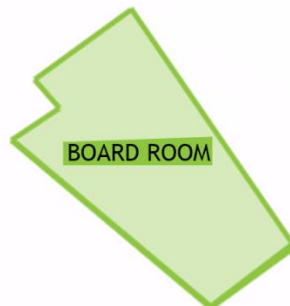
## FLOOR PLAN



## MAIN FLOOR



## UPPER LEVEL





## Foyer

A beautiful 480 sq.ft foyer with a cathedral-esque dramatic 36 ft. high ceiling. A 9 ft digital display wall welcomes the visitors, along with silhouettes of 6 local dinosaur species, leading up to the Dine-O-Saur restaurant and patio. Flanked by two (2) Smart Classrooms, the Aykroyd Family theatre on one side and the amazing Kalaeid-O-Saur Museum gift shop on the other, the foyer offers a wonderful gathering

space for receptions, cocktails and buffet style catering.

Capacity is 125 people (standing).

### Features

- Open and naturally lit for a unique setting
- Red Carpet
- Easy access to the Aykroyd Family Theatre, Museum Gift Shop and Dine-O-Saur Restaurant
- An excellent add on for your event needs

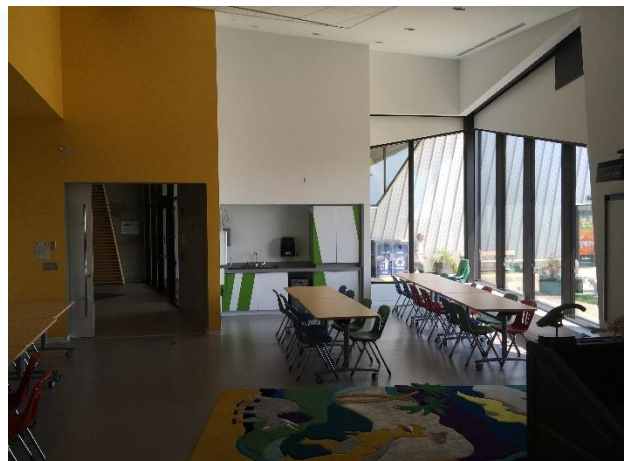
## Classrooms

The welcoming and open classrooms integrate hands on crafts and activities with technology. The two classrooms can accommodate 30 people each or be combined for a larger group. Great for seminars, training sessions, luncheons, birthday parties, breakfast gatherings or meetings. The combined classroom square footage is 1716 sq. ft.

### Features

- Easy to move room divider
- Tables and furniture provided
- Smart board + Wi-Fi
- Podium

Can be transformed to accommodate your event.





## Dine-O-Saur

Located on the southwest end of the museum, the 994 sq. ft. Dine-O-Saur is a bright and inviting area that can be transformed into the elegant space for your event. The Dine-O-Saur opens onto an outdoor space with the beautiful landscape of Northern Alberta and the Dino Playground. The patio is the largest licensed patio in the Grande Prairie Area, and is fully furnished with umbrellas and propane heating rods. Custom and creative menus specific to your event. Food allergies and/or sensitivities are easily accommodated.

A wedding venue is more than just a structure with four walls and a roof - It is the place where memories are created and plays a pivotal role in the story of two unique personalities coming together. Whether you're planning an outdoor rustic wedding, or a luxe, intimate affair, let us design your illustrious day. Our caterer Pam, has over 20 years of experience in the Peace Region.

Restaurant Capacity: 72 people (seated)

Patio Capacity: 400

### Features

- Artificially and naturally lit for all your needs
- Easy access from the entrance and foyer
- Can be booked in conjunction of the foyer for more space to accommodate more guests



## Boardroom

An intimate setting that provides dramatic angled glass panel view overlooking the foyer and gallery, can be used for a private functions, breakfast meetings & luncheons. The boardroom is equipped with a Wi-Fi enabled smart board, kitchenette, serving area and two (2) dedicated bathrooms.

Capacity: 24-30 (seated)

### Features

- Kitchenette
- Conference call setup
- Whiteboards and flipcharts
- Smart board + Wi-Fi
- Bathrooms



## Aykroyd Family Theatre

Have your next presentation or private screening on the big screen as the theatre provides comfortable seating and exceptional sound capabilities. Add excitement to your event by watching a selection from the National Geographic library. Although food and beverages are not permitted in the theatre, contacting Visitor Services can make hosting a breeze. The Aykroyd Family Theatre is a spacious 1182 sq. ft. so guests are comfortable.

Capacity is 70 people (seated)

### Features

- Theatre style seating
- Latest in sound and projection technology
- Easily setup for a podium and microphone





## Parking Lot/Outdoor Spaces

Our outdoor space is the perfect landscape backdrop for your event. This area can be setup to host 300+ people, and you can customize the space to your liking. With the scenery and vast area, you can choose the best spot to host.

### Features

- Open concept for creativity
- Can host over 300 people



## Entire Facility Rental

Let Philip J. Currie Dinosaur Museum transform your private event, with an entire facility rental package. The unique layout, open concept, and welcoming atmosphere are all waiting for you to host your next event.

This rental can also include theatre access, Pipestone Creek Bonebed tours, and interpretive gallery tours. Please talk to the Visitor Services Coordinator about these exciting options.

### Features

- More options to create and enhance your event
- Create breakout sessions with groups in different areas
- Capacity can be expanded depending on event schedule

*All events hosted at Philip J. Currie Dinosaur Museum requiring food service must first be negotiated with the operator of Dine-O-Saur, they have first right of refusal for catering needs.*





## Operating Hours

### Summer (May-October)

Monday CLOSED  
 Tuesday - Friday 10am - 8pm  
 Saturday and Sunday 10am - 6pm  
**Monday June-August 10am - 6pm**

### Winter (November-April)

Monday CLOSED  
 Tuesday - Thursday 10am - 6pm  
 Friday 10am - 8pm  
 Saturday and Sunday 10am - 6pm

## Room Capacity and Rates

Area	Capacity	Hours of Use	Rates (GST not Included)
Full Facility	Please Inquire		
Foyer	240	Up to 8 hours	\$250
Dine-O-Saur	72	Up to 8 hours	\$1000
Boardroom	24	Up to 8 hours	\$350
Classrooms	30 per classroom	Up to 8 hours	\$150 per classroom
Aykroyd Family Theatre	70	Up to 8 hours	\$350
*Pipestone Bonebed Tour	25 per tour	2 hours	\$150 per tour
*Interpretive Gallery Tour	20 per tour	1 hour	\$100 per tour
*Helicopter Tour	3 per tour	15 minutes	\$120 per tour

Capacities may vary and will be confirmed during the booking process.

*\*All tours are add-ons to facility rentals and require to be pre-booked with Visitor Services. Subject to availability. Pipestone Creek Bonebed and Helicopter Tours are weather dependent.*

## Cleaning & Set Up Fees (GST not Included)

Full Facility	Please Inquire
Foyer	\$150
Dine-O-Saur	\$150
Boardroom	\$75
Classrooms	\$75 per side
Aykroyd Family Theatre	\$75
Security	\$35/Hour

*\*Clean up fees are mandatory on any event booking. Birthdays booked through packages have cleaning fees already included. Any unauthorized movement of equipment causing damage will be charged. Security fees are mandatory after Museum hours.*

Many of our areas contain state of the art equipment. It is important to plan any room and/or equipment changes before your event. Our Visitor Services Coordinator will be more than happy to coordinate any changes specific to your event.



## Dino Bus Rental

Our Dino Bus is an E-450, 24 passenger bus with beautiful leather seats, air conditioning, CD/MP3/Radio, roadside safety kit and bus document binder.

Renter must be 25 years or older with Class 4 license and valid credit card in their name. If a company credit is being used, provide signed letter of authorization (I think if someone with authority or whose name is on the company credit card signs the rental agreement that should be enough). We accept VISA and MasterCard.

### Driver's License:

- License must be issued from the Province of Residence.
- License must not be expired.
- No Learners Permits or photocopies of any kind.
- A temporary DL will not be accepted.
- License must be inspected at the time of rental.

### Fuel:

- Before returning, you may refuel the Dino Bus to the same fuel level you received when you picked up the vehicle.
- If a renter chooses not to refuel the Dino Bus they will be charged \$1.25/L.

### Optional Insurance

#### Rental before & after checklist

*Dino Bus will not be permitted outside the Province of Alberta. Any tickets received during rental period will be charged.*

Charge	Rate
Dino Bus	\$350/Day
VLF	\$0.79/Day
Fuel	\$1.25/Litre
After 200KM	\$0.39/KM
Late Fee	\$40/Hour

***Pricing does not include damage waiver. Additional surcharges, taxes, etc. May apply. Day rates are Museum hours only (29 minute grace period). Additional fees added for extended hours.***



## Event Information Form

Date: \_\_\_\_\_

Name: \_\_\_\_\_

Phone Number: \_\_\_\_\_

Email: \_\_\_\_\_

Date required for booking: \_\_\_\_\_

Time required for booking: From \_\_\_\_:\_\_\_\_ To \_\_\_\_:\_\_\_\_

Facility required for booking: \_\_\_\_\_

Event details: \_\_\_\_\_

\_\_\_\_\_  
\_\_\_\_\_  
\_\_\_\_\_  
\_\_\_\_\_  
\_\_\_\_\_  
\_\_\_\_\_  
\_\_\_\_\_

Number of people (Specify any children): \_\_\_\_\_

Catering Requests: \_\_\_\_\_

\_\_\_\_\_  
\_\_\_\_\_  
\_\_\_\_\_

Dietary Restrictions/Allergies: \_\_\_\_\_

\_\_\_\_\_

